

# PureWick®

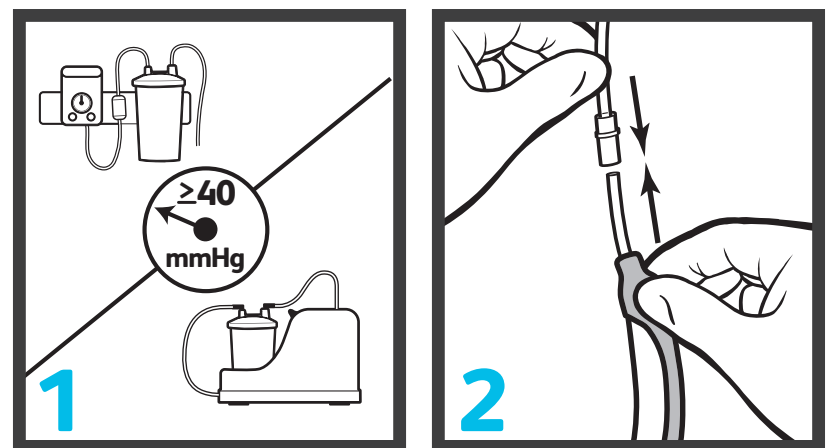
## female external catheter

*Simple, non-invasive urine management for women*

## Directions for use

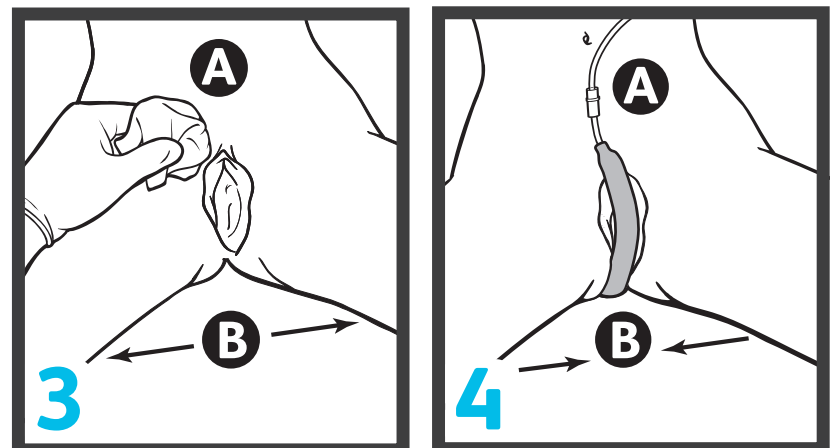
### Setup

1. Connect canister to wall suction and set to a minimum of 40mmHg continuous suction. Always use the minimum amount of suction necessary.
2. Using standard suction tubing, connect the PureWick® female external catheter to the collection canister.



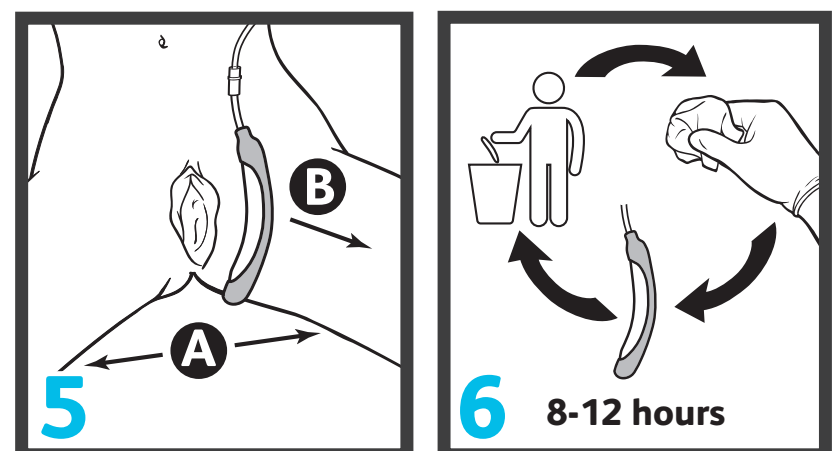
### Placement

3. **A** Perform perineal care and assess skin integrity.  
**B** Separate legs, gluteus muscles, and labia. Palpate pubic bone as anatomical marker.
4. **A** With soft gauze side facing patient, align distal end at gluteal cleft. Gently tuck soft gauze side between separated gluteus and labia. Ensure that the top of the gauze is aligned with the pubic bone.  
**B** Slowly place legs back together.



### Removal and maintenance

5. **A** Fully separate the legs, gluteus, and labia.  
**B** To avoid potential skin injury upon removal, gently pull the PureWick® female external catheter directly outward. Ensure suction is maintained while removing.
6. Replace every 8-12 hours or if soiled with feces or blood. Assess skin for compromise and perform perineal care prior to placement of a new PureWick® female external catheter.



*Indications: The PureWick® female external catheter is intended for non-invasive urine output management in female patients.*

*Caution: This product contains dry natural rubber*

*Contraindications: The PureWick® female external catheter should not be used on patients with urinary retention.*

*Warnings: To avoid potential skin injury, never push or pull the PureWick® female external catheter against the skin during placement or removal. Never insert the PureWick® female external catheter into the vagina, anal canal or other body cavities. Do not use the PureWick® female external catheter with a bedpan or any material that does not allow for sufficient airflow. Discontinue use if an allergic reaction occurs. After use, this product may be a potential biohazard. Dispose of in accordance with applicable local, state and federal laws and regulations.*

*Please consult package insert for more detailed safety information and instructions for use.*

C. R. Bard, Inc., Covington, GA, U.S.  
1.800.526.4455

[crbard.com/medical](http://crbard.com/medical)

BD, the BD Logo and PureWick are trademarks of Becton, Dickinson and Company. © 2018 BD and its subsidiaries. All rights reserved.  
1808-16 BMD/FECs/0817/0015(3)

