



Specifications

	BladderView™ M1	BladderView™ M1-W
Probe frequency	2.5MHZ	2.5MHZ
Measurement volume	0-999ml	0-999ml
Display & control	2.4 inch touch screen	2.4 inch touch screen
Operation mode	Easy and Expert	Easy and Expert
Language selection	Multiple language	Multiple language
Battery capacity	2600 mAh	2600 mAh
Printer	Bluetooth	Bluetooth
Data transmission	USB	USB/Wi-Fi
Data storage	Built-in TF card	Built-in TF card
Continuous usage	>3hrs and 20 mins	>3hrs and 20 mins
Standby time	>5 hours	>5 hours
Accuracy	+/-14% on volume > 100mL +/-14mL on volume <100mL	+/-14% on volume > 100mL +/-14mL on volume <100mL
Patient history data review	On PC	On PC and M1-W

Contact Us

Suzhou PeakSonic Medical Technology Co., Ltd.  
2A, West Side of Building G4, Kunshan Hi-Tech Medical Device Industrial  
Park , Qiandeng Town, Kunshan Suzhou, Jiangsu, 215341, China  
sales@peaksonic.com.cn  
TEL:+86 512 36886800  
www.peaksonicmedical.com



BladderView™ M1  
Ultrasound Bladder Scanner



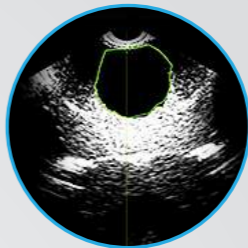
Empowering Healthcare Through Innovations

BladderView™ M1

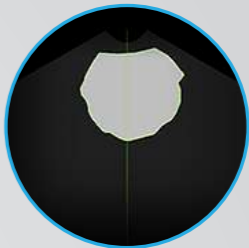
BladderView™ M1 is a handheld ultrasound system designed to measure urinary volume non-invasively. It is a handheld structure consisting of a probe and docking station.

Measurement of urinary volume provides the basis for clinical catheterization, post-void residual assessment and diagnosis of bladder and kidney diseases.

Working Mode



Expert Mode



Easy Mode



Unique Characteristics



Capacitive touch screen

Information record by virtual keyboard or voice annotation



Wi-Fi data transmission  
Patient records review

Wireless bluetooth printing



Feature Highlights

- 2.4 inch capacitive touch screen
- Virtual keyboard operation
- Storage space for accommodation of >10,000 measured data
- Voice annotation
- Multiple language selection
- Chargeable battery
- Calibration free



• Portable version



• Cart version